

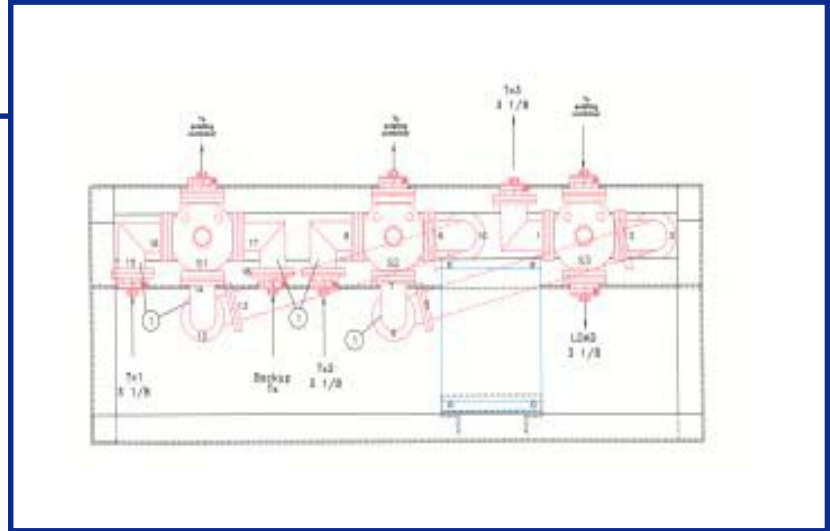


Micro Communications, Inc.

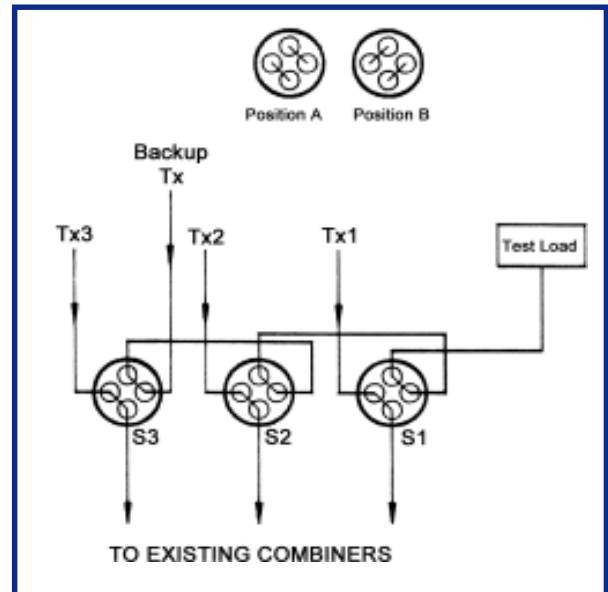
SERIES 56300

N + 1 SWITCHING MATRIX

- Compact Size
- Standard EIA sizes
- Microprocessor Controlled
- Quick Installation



MCI's N + 1 Switching Matrix is designed to allow a standby transmitter to be used in place of any number of main transmitters. A path to a test load is provided so that any of the inputs can be fed directly to the load. Commonly used in FM multi-station sites, where a tunable FM transmitter is provided as backup, should one of the main transmitters fail. Applications for VHF and UHF are also available. The matrix consists of motorized coax switches interconnected to each other using rigid line components. The switching modes are controlled with MCI's "Micro-Switcher" microprocessor based controller that requires a dry contact closure to activate the mode switching. The N + 1 is available in standard EIA coax sizes.





Micro Communications, Inc.

Microwave A MICROWAVE TECHNIQUES COMPANY

**SERIES 56300
N + 1 SWITCHING MATRIX**

SPECIFICATIONS

VSWR:	1.02 to 1.08:1 (based on frequency)
Frequency:	Specify channels of use
Insertion loss:	0.20 dB max (0.10 dB typical)
Input Isolation:	40 to 60 dB (based on frequency)
Impedance:	50 ohms
Connections:	Standard EIA coax

MODEL		56335
CONNECTORS		6 1/8
SIZE	in	84x36x40
	(cm)	(213x92x101)
WEIGHT	lbs	630
	(kg)	(286)
MODEL		56334
CONNECTORS		4 1/16
SIZE	in	80x30x36
	(cm)	(203x76x92)
WEIGHT	lbs	360
	(kg)	(163)
MODEL		56333
CONNECTORS		3 1/8
SIZE	in	74x24x32
	(cm)	(188x61x81)
WEIGHT	lbs	240
	(kg)	(109)
MODEL		56332
CONNECTORS		1 5/8
SIZE	in	48x18x30
	(cm)	(122x46x76)
WEIGHT	lbs	100
	(kg)	(45)
MODEL		56331
CONNECTORS		7/8
SIZE	in	48x18x30
	(cm)	(122x46x76)
WEIGHT	lbs	80
	(kg)	(36)

Options available:

- Wattmeter
- Couplers
- Fine Matchers
- Test Load



Micro Communications, Inc.

Microwave A MICROWAVE TECHNIQUES COMPANY

Microwave Techniques, LLC | 28 Sanford Drive, Gorham, ME 04038

Email: sales@microwavetechniques.com | Phone: 1-207-854-1700